



HOMEOWNER ASSISTANCE PROGRAM (HoAP)

CONTACT INFORMATION + SURVEY

RECOVERY.HOUSTONTX.GOV

**CALL
832.393.0550**



HOUSING RESOURCE CENTERS

Housing resources centers are accessible by both car and public transportation. Directions on back.

- 1 Northwest Housing Resource Center**
13101 Northwest Freeway, Suite 101
Houston, TX 77040
- 2 Northeast Housing Resource Center**
9551 N. Wayside Dr. Houston, TX 77028
(North Wayside Sports & Recreation Center)
- 3 Southeast Housing Resource Center**
11550 Fuqua Street, 3rd Floor
Houston, TX 77034
- 4 Southwest Housing Resource Center**
6464 Savoy Drive, Suite 110
Houston, TX 77036

**HOURS OF
OPERATION:**

MON - FRI
9 AM-6 PM

SAT
by appointment

SUN
Closed

Evenings
by appointment



HARVEY RECOVERY SURVEY

RECOVERY.HOUSTONTX.GOV

The first step in getting help after Harvey is to complete the Harvey Recovery Survey to determine if there are programs you may qualify for. After you complete the survey, you may receive an invitation to apply to the specific program most relevant to you.





NORTHWEST HOUSING RESOURCE CENTER

13101 Northwest Frwy.
Suite 101
Houston, TX 77040

DIRECTIONS

FROM THE 610 LOOP

From 610, take exit 13A for US 290W. In about 4 miles, take the W Tidwell Rd./ Hollister Rd. exit. Merge onto Northwest Freeway and stay to the right. The HRC is about 0.5 miles on the right.

FROM BELTWAY 8

Take TX-8 Beltway /Sam Houston Tollway. Merge onto US-290E/Northwest Freeway toward Downtown. In approximately 3 miles, exit toward W Tidwell Rd./Hollister Rd. Merge onto Northwest Freeway. In about 0.5 miles turn left onto Hollister Rd. The HRC is on the right.

CLOSEST METRO

From North:

Bus Route 45 (Tidwell)
Stop: #7799, W. Tidwell Rd. and Hollister Rd.
Walking distance: 0.6 miles.
Walking time: 11 minutes

From South:

Bus Route 23 (Clay-W. 43rd)
Stop: #8430, W. 43rd St. and Langfield Rd.
Walking distance: 0.8 miles
Walking time: 16 minutes



NORTHEAST HOUSING RESOURCE CENTER

9551 N. Wayside Dr.
Houston, TX 77028
(North Wayside Sports & Recreation Center)

DIRECTIONS

FROM THE 610 LOOP

Follow 610 to Exit 23B for North Wayside Drive toward Liberty Road. In approximately 3.2 miles turn left onto Hamlet to reach the parking lot. The HRC is in the North Wayside Sports and Recreation Center.

FROM BELTWAY 8

From Beltway 8, merge onto I-69/US-59 S toward Houston. In approximately 5.2 miles, take the exit toward Little York Rd. Merge onto the Eastex Freeway Service Rd. In 0.2 miles turn left onto Little York Rd. In 3 miles, turn right onto Wayside Dr. In 1.5 miles, turn right onto Hamlet to reach the parking lot. The HRC is in the North Wayside Sports and Recreation Center.

CLOSEST METRO

Bus Route 78 (Wayside)
Stop: #2636, N. Wayside Dr. and Tidwell Fountains Ln.
Walking Distance: 0.1 miles
Walking time: 1 minute

Bus Route 78 (Wayside)
Stop: #11686, N. Wayside Dr. and Tidwell Rd.
Walking distance: 0.1 miles
Walking time: 2 minutes



SOUTHWEST HOUSING RESOURCE CENTER

6464 Savoy Drive
Suite 110
Houston, TX 77036

DIRECTIONS

FROM I-69 (going northeast)

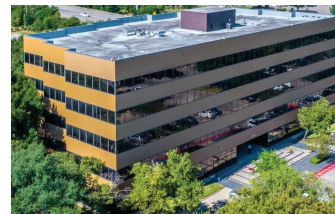
From I-69S, take the exit to Hillcroft Ave. In approximately .8 miles, turn right on Savoy Dr. In 0.2 miles, veer left to stay on Savoy. The HRC is on your right in 400 feet.

FROM I-69 (going southwest)

From I-69N, take the exit at Hillcroft Ave./Westpark Drive, stay in left land and circle under expressway. In 0.4 miles turn right on Savoy Drive. In 0.2 miles veer left to stay on Savoy. The HRC is on your right in 400 feet.

CLOSEST METRO

Bus Routes 152, 153 (Harwin Express)
Stop: #7409, Harwin Dr. and Savoy Dr.
Walking distance: 0.5 miles
Walking time: 9 minutes



SOUTHEAST HOUSING RESOURCE CENTER

11550 Fuqua Street
3rd Floor
Houston, TX 77034

DIRECTIONS

FROM THE 610 LOOP

From 610, take exit 32A to merge onto I-45 S toward Galveston. In approximately 6.5 miles, take exit 33, Beltway 8/Frontage Rd/Fuqua St. Merge onto Gulf Freeway. In about 0.8 miles curve right to Fuqua St. In 0.1 miles turn left on Fuqua St. In 0.3 miles, the HRC is on the right. (Turn right at the corner to enter parking lot.)

FROM I-45 (going north)

From I-45, take exit 33, Beltway 8/Frontage Rd/Fuqua St. Merge onto Gulf Freeway. In about 0.6 miles curve right to Fuqua St. In 0.1 miles, turn right on Fuqua St. The HRC is on the right. (Turn right at the corner to enter parking lot.)

CLOSEST METRO

Bus Route 297 (South Point-Monroe/TMC P&R)
Stop: #10280, South Point
Walking distance: 0.6 miles
Walking time: 11 minutes